

Rochester Knitting Guild Mosaic Cowl Knit-A-Long
February – March 2020



Materials:

Worsted weight yarn in two colors with good/high contrast;
about 150 yards of each color

Knitting needles in US 8 or 9 [5 or 5.5 mm]

Stitch markers

Blunt needle for grafting or seaming

Gauge:

Two stitch pattern options:

Simple basketweave with a 6 stitch, 16 row repeat

Large checkerboard/buildings with a 14 stitch, 31 row repeat

What can you knit using these charts?

Dishcloth

Coaster/Mug Mat

Wrist warmers

Cowl knit “portrait” on 52 stitches or “landscape” on a minimum of 128 stitches (depending on your gauge). 128 should give a straight-ish tube that you can pop on and remove without ripping your ears off. If you’d prefer a looser cowl, cast on more repeats of the pattern you choose.

The cowl is knit in a long rectangle and either seamed or grafted together to join into a circle after all the knitting is done. The sample cowl is knit in both of the sample stitch patterns; half in the simple basketweave and half in the large checkerboard pattern.

Feel free to:

Knit the entire cowl in one stitch pattern

Alternate the two patterns

Use multiple Contrasting Colors, one for each repeat of the pattern

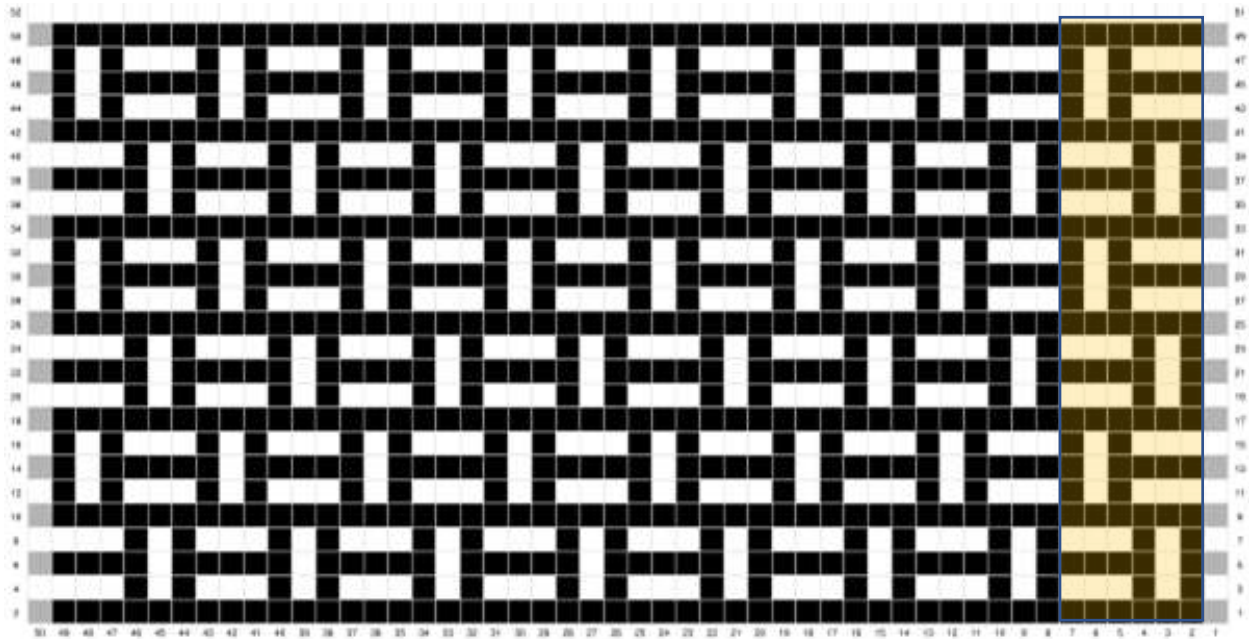
KEEP IN MIND –

Always slip purlwise with the yarn held to the wrong side of the piece. On odd number rows, this means the stitch is slipped with the yarn in the back and on even number rows, the stitch is slipped with the yarn in the front (close to you).

Each block in the chart represents TWO rows



Simple Basketweave Chart (*shaded area is the 6 stitch repeat*) gray stitches at beginning and end of row ARE in the written instructions, just outside the parentheses.



Row 1: **MC** knit across

Row 2: **MC** knit across

Row 3: CC K1, *(Slip 1, K1, Slip 1, K3)*, repeat * to * across row, end K1

Row 4: CC K1, *(K3, Slip 1, K1, Slip 1)*, repeat * to * across row, end K1

Row 5: **MC** K1, *(K1, Slip 1, K4)*, repeat * to * across row, end K1

Row 6: **MC** K1, *(K4, Slip 1, K1)*, repeat * to * across row, end K1

Row 7: CC K1, *(Slip 1, K1, Slip 1, K3)*, repeat * to * across row, end K1

Row 8: CC K1, *(K3, Slip 1, K1, Slip 1)*, repeat * to * across row, end K1

Row 9: **MC** knit across

Row 10 **MC** knit across

Row 11: CC K1, *(K3, Slip 1, K1, Slip 1)*, repeat * to * across row, end K1

Row 12: CC K1, *(Slip 1, K1, Slip 1, K3)*, repeat * to * across row, end K1

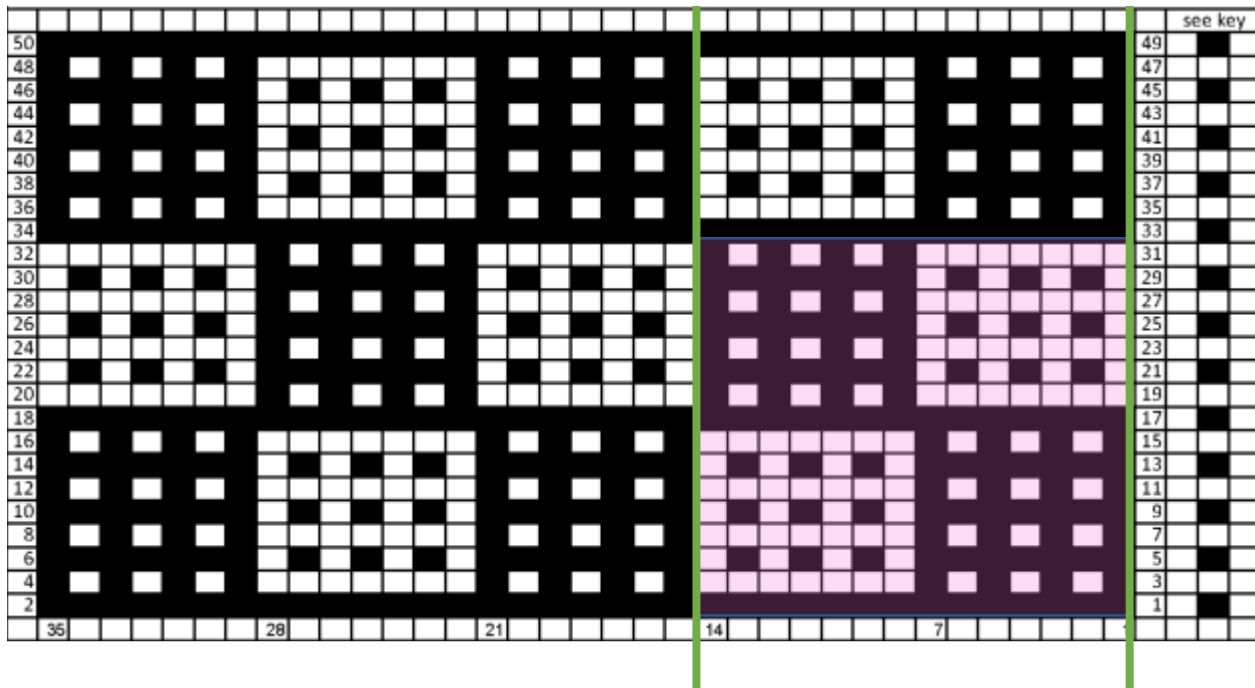
Row 13: **MC** K1, K4, *(Slip 1, K 5)* repeat * to * across row, end Slip 1, K2

Row 14: MC K1, *(Slip 1, K5)* repeat across row, end Slip 1, K4

Row 15: CC K1, *(K3, Slip 1, K1, Slip 1)*, repeat * to * across row, end K1

Row 16: CC K1, *(Slip 1, K1, Slip 1, K3)*, repeat * to * across row, end K1

Large Checkerboard pattern (14 stitch repeat highlighted in pink)



Ravelry

RLG Group thread can be found here: <https://www.ravelry.com/discuss/rkg----rochester-knitting-guild/topics/4006368>